

# CONCENTRATION, MOTILITY AND DROPLETS

## Droplet detection

A highly important parameter for the analysis of boar semen quality is the percentage of cytoplasmic droplets (including bent tails). The presence of mid-piece and distal cytoplasmic droplets above a certain percentage is considered abnormal and indicates suboptimal semen quality.

The Qualisperm™ Boar software is an easy to use system which allows fast and accurate measurement of the concentration, motility and droplets in routine handling. An advantage of the system is the large field of view which enables analyzing up to 1000 sperms in one field. The large number of sperms per measurement leads to much better accuracy and statistics. This feature together with our advanced image recognition algorithms enables the Qualisperm™ software to measure concentration, motility and percentage of protoplasm droplets very precise and fast.

---

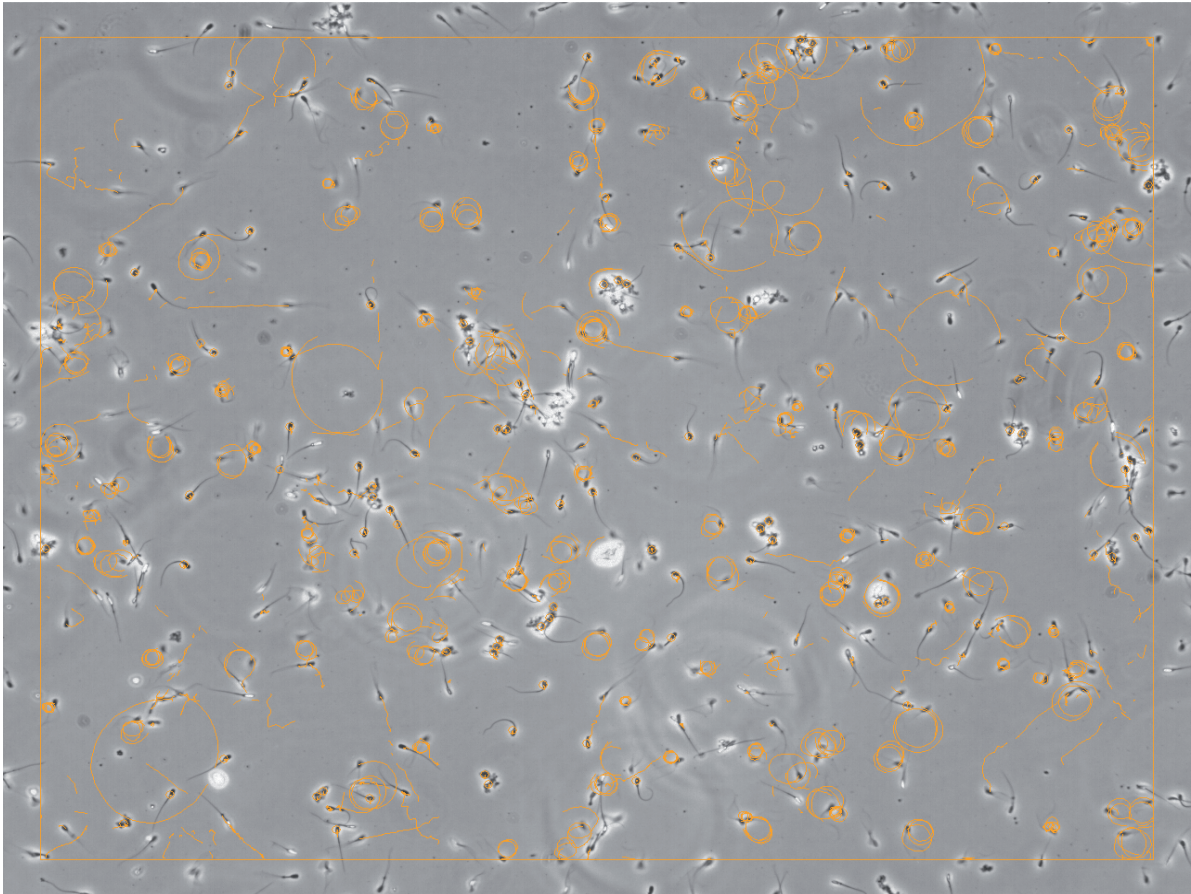
## Speed for high throughput up to 3000 sperm measured in less than 30 seconds

Two to three fields per chamber analysis allows 2000-3000 sperm cells analyzed and are sufficient to give the end-user all the information needed, but when needed the system is able to facilitate up to nine measurements per chamber.

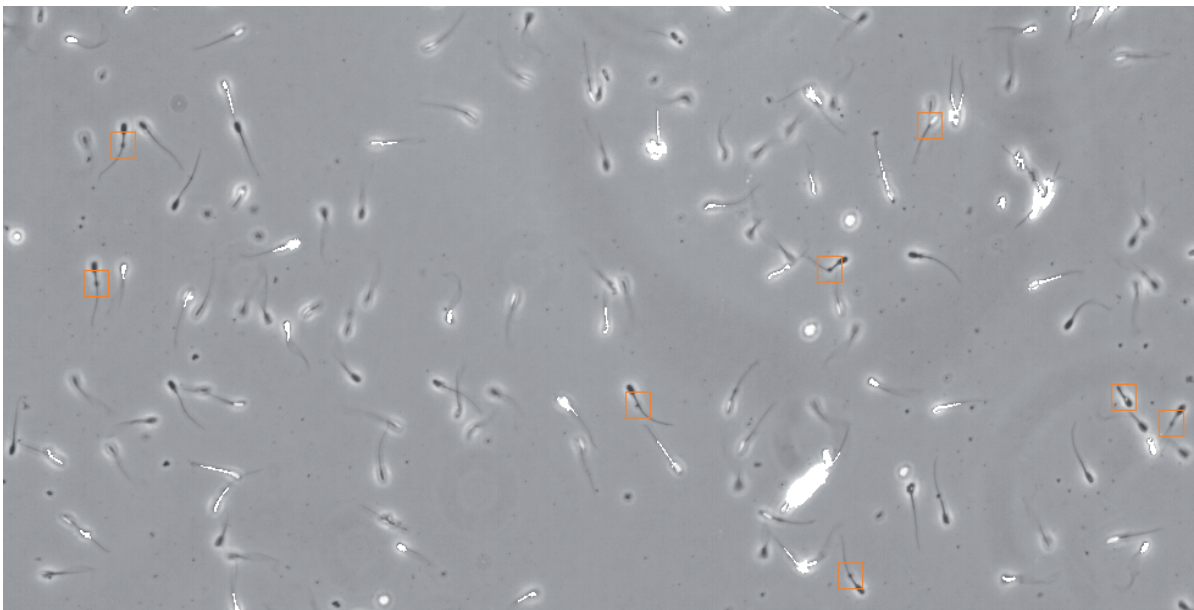
The system uses for motility measurement the trajectory analysis or the correlation analysis, depending on the concentration of sperm cells analyzed. Speed class borders can be set by the end-user / administrator according to their own wishes and experience.

There is no extensive training needed to use the system as it is very intuitive. Entering donor data to image acquisition can be done by a single key procedure to improve simplicity and facilitate routine handling.

# CONCENTRATION, MOTILITY AND DROPLETS



Qualisperm stores image of marked sperms with trajectory.



Qualisperm stores droplet detection images.